



## Rabbit Anti-Human CD15 Monoclonal Antibody (Clone SP159)

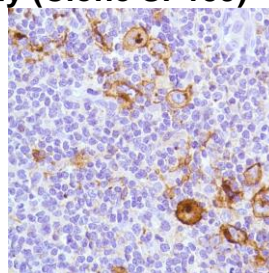
### CATALOG #:

**M4590** 0.1 ml rabbit monoclonal antibody purified by protein A/G in PBS/1% BSA buffer pH 7.6 with less than 0.1% sodium azide.

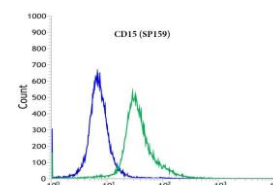
**M4592** 0.5 ml rabbit monoclonal antibody purified by protein A/G in PBS/1% BSA buffer pH 7.6 with less than 0.1% sodium azide.

**M4594** 1.0 ml rabbit monoclonal antibody purified by protein A/G in PBS/1% BSA buffer pH 7.6 with less than 0.1% sodium azide.

**M4591** 7.0 ml pre-diluted rabbit monoclonal antibody purified by protein A/G in TBS/1% BSA buffer pH 7.6 with less than 0.1% sodium azide.



*Human Hodgkin's Lymphoma stained with anti-CD15 antibody*



*Flow cytometric analysis of rabbit anti-CD15 (SP159) antibody in HL-60 (green) compare to negative control of rabbit IgG (blue)*

### INTENDED USE:

For Research Use Only. Not for use in diagnostic procedures.

### CLONE:

SP159

### IMMUNOGEN:

Lewis-X purified from U937 cells.

### IG ISOTYPE:

Rabbit IgG

### EPITOPE:

Not determined

### MOLECULAR WEIGHT:

220 kDa

### SPECIES REACTIVITY:

Human (tested). (See [www.springbio.com](http://www.springbio.com) for information on species reactivity predicted by sequence homology.)

### DESCRIPTION:

CD15 (3-fucosyl-N-acetyl-lactosamine) is a carbohydrate adhesion molecule expressed in majority of circulating granulocytes and monocytes, some epithelial cells, and is absent in normal lymphocyte. It is also expressed on Reed-Sternberg cells of Hodgkin's disease, T cell lymphomas including mycosis fungoides, some leukemia, and some adenocarcinoma.

### APPLICATIONS:

Immunohistochemistry (IHC) and Flow Cytometry

### IHC PROCEDURE:

**Specimen Preparation:** Formalin-fixed, paraffin-embedded tissues are suitable for use with this primary antibody.

**Deparaffinization:** Deparaffinize slides using xylene or xylene alternative and graded alcohols.

**Antibody Dilution:** If using the concentrate format of this product, dilute the antibody 1:50. The dilutions are estimates; actual results may differ because of variability in methods and protocols.

**Antigen Retrieval:** Boil tissue section in 1mM EDTA buffer, pH 8.0 for 10 min followed by cooling at room temperature for 20 min.

**Primary Antibody Incubation:** Incubate for 10 minutes at room temperature.

**Slide Washing:** Slides must be washed in between steps. Rinse slides with PBS/0.05% Tween.

**Visualization:** Detect the antibody as instructed by the instructions provided with the visualization system.

### IHC POSITIVE CONTROL:

Hodgkin's lymphoma

### FLOW CYTOMETRY:

Recommended starting protocol: Dilute the antibody 1:200. Incubate for 30 minutes at 4°C. The dilution is an estimate; actual results may differ because of variability in methods and protocols. Optimal dilution and procedure should be determined by the end user.

### FLOW CYTOMETRY POSITIVE CONTROL:

HL-60 Cell Line

### CELLULAR LOCALIZATION:

Membrane

**STORAGE & STABILITY:**

Store at 2-8°C. Do not freeze. The user must validate any other storage conditions. When properly stored, the reagent is stable to the date indicated on the label. Do not use the reagent beyond the expiration date.

There are no definitive signs to indicate instability of this product; therefore, positive and negative controls should be tested simultaneously with unknown specimens.

If unexpected results are observed which cannot be explained by variations in laboratory procedures and a problem with the reagent is suspected, contact Technical Support at [spring.tech@ventana.roche.com](mailto:spring.tech@ventana.roche.com).

**WARNINGS &  
PRECAUTIONS:**

1. Avoid contact of reagents with eyes and mucous membranes. If reagents come into contact with sensitive areas, wash with copious amounts of water.
2. This product is harmful if swallowed.
3. Consult local or state authorities with regard to recommended method of disposal.
4. Avoid microbial contamination of reagents.